

**TIGER** Drylac®

POWDER COATINGS

**Natives and Aliens**  
color selection



Inspired by 'Native Elements' that occur in nature in uncombined form as well as by 'Native Cultures' that drape us with endless accounts of mystery, the 'Natives' color selection imparts stability, puts the spotlight on the worth of minerals and metals, and gravitates around the homecoming to nature to confer gratitude to Mother Earth for its kindness and magnificence.

Brushed, polished and old-fashioned antique coppers turn into dynamic 'Maya', 'Navajo' and 'Nunavut'. Gold converts into shimmering 'Aztec' and brushed nickel passionately howls 'Geronimo'.

The 'Natives' color selection unearths earthy tones with a scent from the past and a twenty-first century twist. It interlinks muted hushed nickel with pearlescent gold and sparkling aluminum finishes.

**Natives**



TIGER Drylac® NATIVES AND ALIENS

MAYA | 49/95381

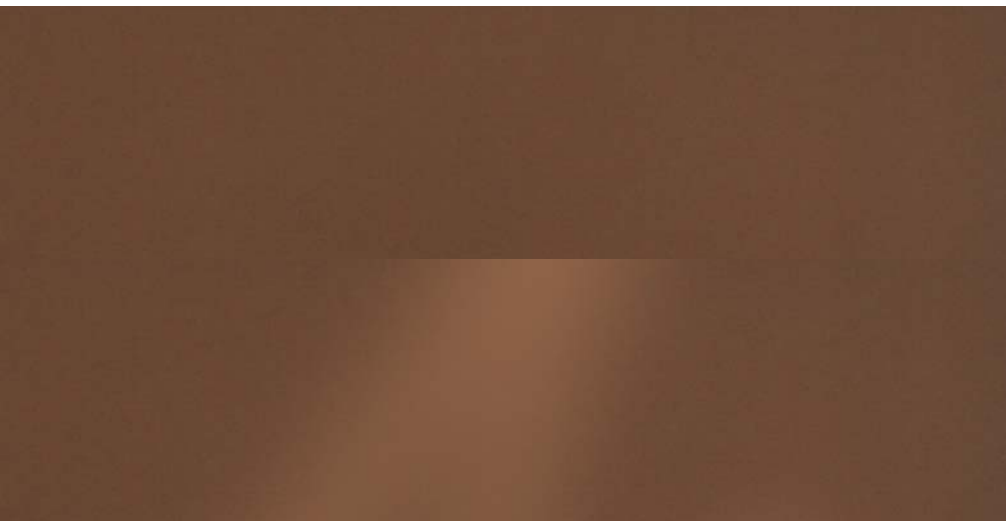
GLOSSY BONDED



TIGER Drylac® NATIVES AND ALIENS

**NAVAJO** | 49/95361

GLOSSY BONDED



TIGER Drylac® NATIVES AND ALIENS

**NUNAVUT** | 49/03001

GLOSSY SMOOTH

TOPCOATED WITH **CLEAR FLAT MATTE** | 16/00030

**NUNAVUT** | 49/03001

GLOSSY SMOOTH



TIGER Drylac® NATIVES AND ALIENS

AZTEC | 49/95202

GLOSSY BONDED

TOPCOATED WITH **BENGAL CLEAR GLOSSY** | 49/01234

AZTEC | 49/95202

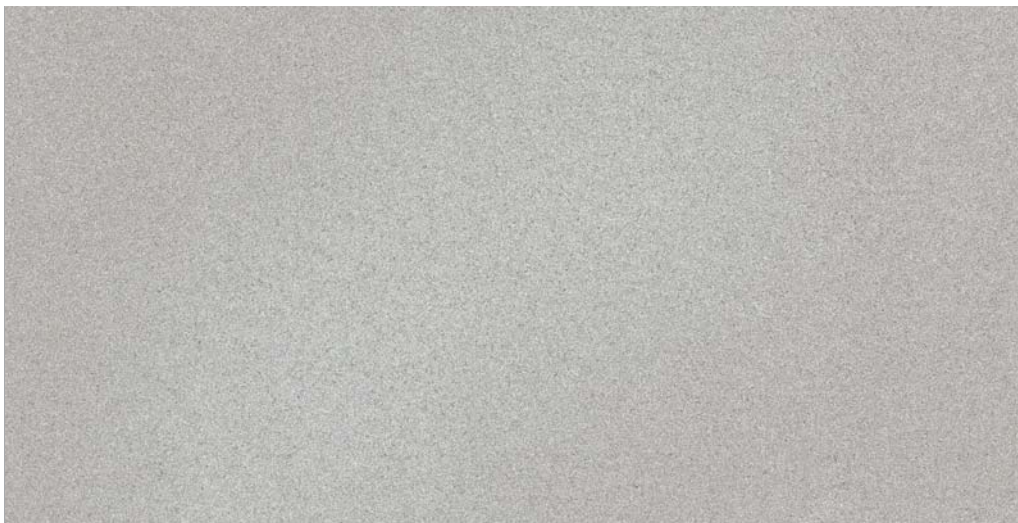
GLOSSY BONDED



TIGER Drylac® NATIVES AND ALIENS

**GERONIMO** | 44/00049

SATIN SMOOTH



TIGER Drylac® NATIVES AND ALIENS

**SPARKLE SILVER** | 49/90450

GLOSSY BONDED



Motivated by the shift in consciousness attributed to the end of the Mayan calendar and all theories considering life on Earth, as we know it, the result of alien conspiracies with our ancestors over thousands of years ago, the 'Aliens' color selection creates a celestial divergence with the 'Natives'.

Oil-rubbed, burnished, matte antique and gild bronzes metamorphose into cosmic 'Black Star', 'Zokuna', 'Nibiru', 'Orion' and 'Andor'. Old, brushed and lacquered brasses are transmuted into 'Carina', 'Chameloid' and 'Tandar' to unite with polished chrome 'Kromezone'.

The 'Aliens' color selection juxtaposes shimmer with dimmed and hybridizes them into extraterrestrial transparent and shape shifting finishes creating an unusual yet alluring appearance.

**Aliens**



TIGER Drylac® NATIVES AND ALIENS

ANDOR | 49/95203  
REDUCED GLOSS BONDED



TIGER Drylac® NATIVES AND ALIENS

ORION | 49/95612  
SPECIAL GLOSS BONDED

TIGER Drylac® NATIVES AND ALIENS

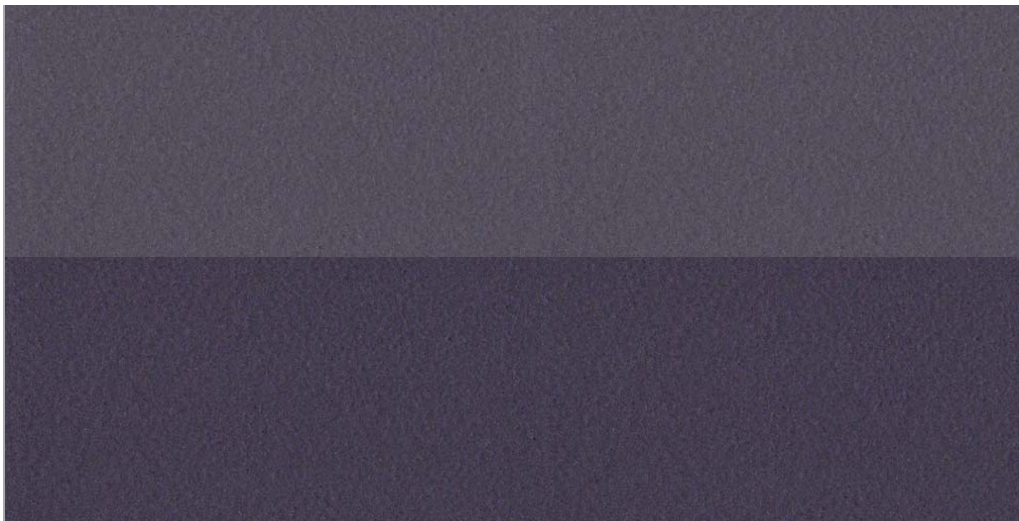
**BLACK STAR** | 16/81708

FLAT MATTE SMOOTH



TIGER Drylac® NATIVES AND ALIENS

ZOKUNA | 49/00106  
GLOSSY SMOOTH



TIGER Drylac® NATIVES AND ALIENS

**NIBIRU** | 49/95821  
MATTE BONDED  
(chameleon effect)

**NIBIRU** | 49/95805  
GLOSS BONDED  
(chameleon effect)



TIGER Drylac® NATIVES AND ALIENS

**CARINA** | 49/06001

GLOSSY SMOOTH

TOPCOATED WITH **CLEAR FLAT MATTE** | 16/00030

**CARINA** | 49/06001

GLOSSY SMOOTH



TIGER Drylac® NATIVES AND ALIENS

**CHAMELOID** | 49/02001  
HIGH GLOSS BONDED  
(chameleon effect)





TIGER Drylac® NATIVES AND ALIENS

**TANDAR** | 49/95701  
SEMI GLOSS BONDED

TIGER Drylac® NATIVES AND ALIENS

**KROMEZONE** | 49/95001

HIGH GLOSS BONDED

TOPCOATED WITH **BENGAL CLEAR GLOSSY** | 49/01234

**KROMEZONE** | 49/95001

HIGH GLOSS BONDED

**USA**

TIGER Drylac U.S.A., Inc.  
St. Charles, IL 60174  
customerservice.us@tiger-coatings.us

**CANADA**

TIGER Drylac Canada Inc.  
Guelph, ON, N1G 4P5  
customerservice.ca@tiger-coatings.com

**MEXICO**

TIGER Drylac México S.A. de C.V.  
Naucalpan, Edo. De México C.P. 53580  
tigermexico@tiger-coatings.com

[www.tiger-coatings.com](http://www.tiger-coatings.com) | [www.tiger-coatings.us](http://www.tiger-coatings.us) | 1-800-243-8148

FAN-GEN-1007-EN-0112

Drylac®

A BETTER FINISH. FOR A BETTER WORLD.